

# SMART COMMAND

by **CAROMA**

Revision: 0

Date: 30/10/2024

Supersedes all previous issues

## Basin Outlet Tapware

Electronic Hands-Free, Bluetooth® Enabled, Low-Flow



## Basin Outlet Tapware Low Flow



Chrome version

### Smart Command™ Basin Outlet Tapware Low Flow

	Code No.
Chrome	98502C6AF-KIT
Matte Black	98502B6AF-KIT
Gunmetal	98502GM6AFSMO-KIT
Brushed Nickel	98502BN6AF-KIT
Brushed Brass	98502BB6AFSMO-KIT
Rough-In Kit	98498F

- Trim kit and Rough in kit included
- Slimline design featuring low flow for the ultimate design focused sustainability solution.
- Accurate and reliable time of flight sensors to detect hands & minimise accidental activation.
- Prominent reassurance LED displaying three separate colour modes (Cold/Warm/Hot).
- Advanced self configuring tap understands the surrounding surfaces and alters setting appropriately.
- Touch free activation for improved hygiene.
- Data capture from Tapware activations correlated with sanitaryware use provides insight into hygiene practices at any given time.
- BlueTooth enabled for direct access from a smart device and communication to Caroma Smart Command Cloud.
- Connected Smart tap enables quick configuration of operating parameters, testing of fixture status and usage review via Caroma Smart Command Cloud, Mobile App or through a BMS system.
- Hard wearing, low maintenance and solid lead free brass construction.

**Outlet:** Flowrate: 1.6 Litre per minute. WELS 6 Star.

**Hygienic Flush:** Hygienic flush every 24 hours (optional).

**Electronic Valve:** The operating voltage of the valve is 6 volts DC.

**Electronics:** Supply voltage to the system is 240V AC 50Hz. Operating current 6 volts DC.

**Installation:** Single Temperature, Male DN15 (G1/2") water connection.  
For general electrical connection install a plug socket 240V AC.

Also available in the following colour options:



Matte Black



Gunmetal



Brushed Nickel



Brushed Brass

All dimensions are in millimetres and are subject to normal manufacturing variations.  
Caroma pursues a policy of continuing improvement in design and performance of its products.  
The right is therefore reserved to vary specifications without notice.

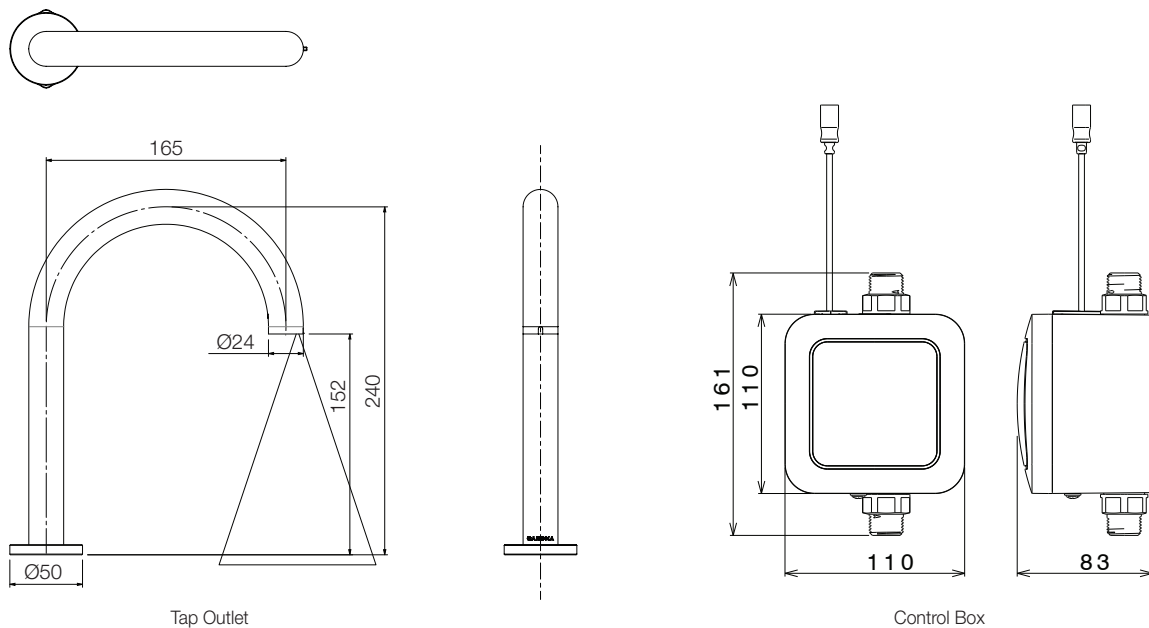
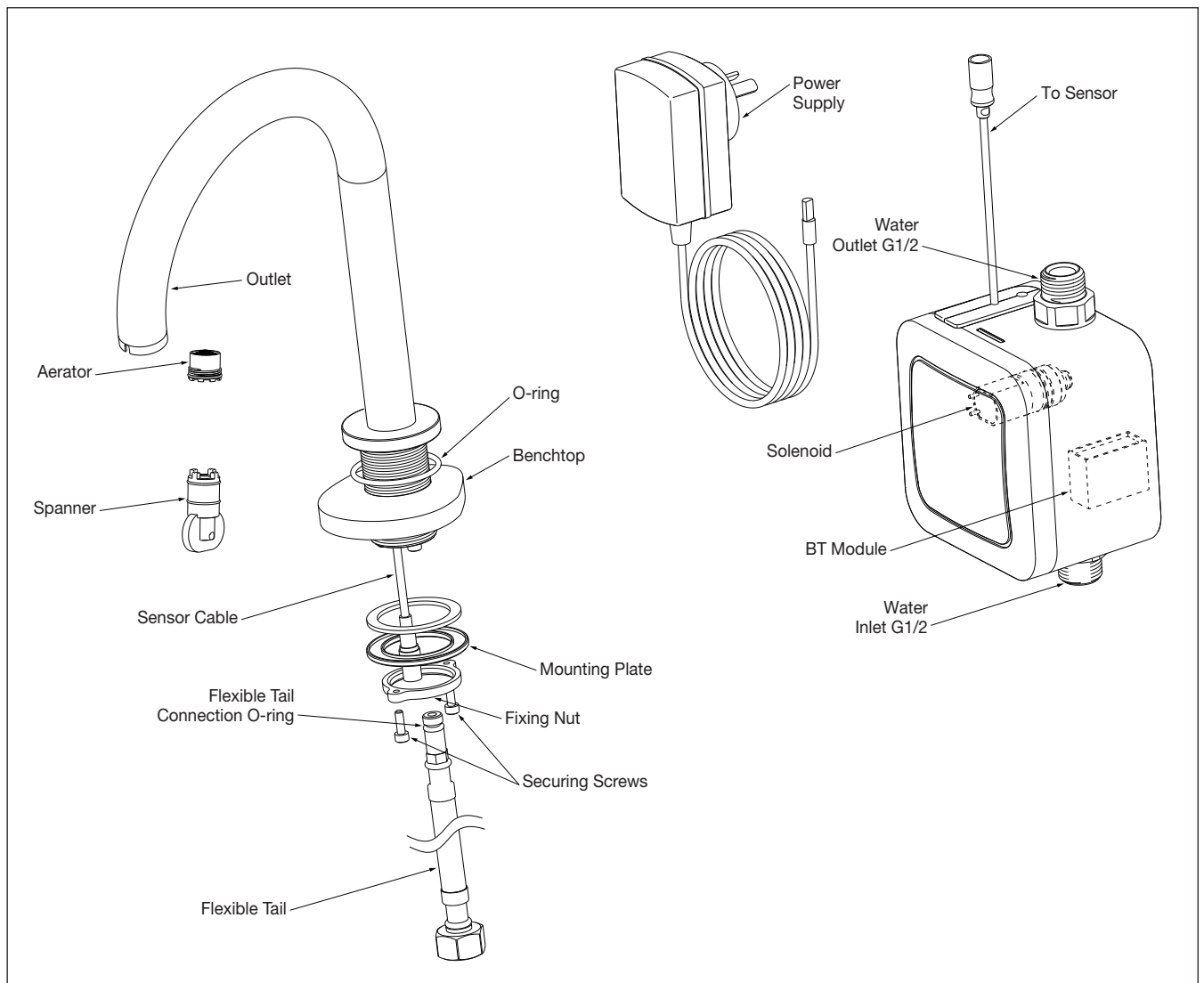


Figure 1: Overall Dimensions



<b>SMART COMMAND</b> <small>by CAROMA</small>	<b>Technical Data</b> <b>Basin Outlet Tapware</b>
<b>Ethernet Gateway Dimensions</b>	Distance to Centre of Outlet: 165mm x Height: 240mm
<b>Flowrate</b>	1.6 Litre per minute. WELS 6 Star
<b>Power Supply</b>	Hob mounted power pack (supplied)
<b>Sensor Type</b>	TOF (time of flight)
<b>Maximum Power Consumption</b>	20mA
<b>Pressure Requirements</b>	Static inlet pressure range: 150 - 800kPa New regulation: -500kPa maximum static pressure
<b>Maximum Temperature</b>	80°C
<b>Plug Pack Input</b>	240V AC 50/60 Hz
<b>Plug Pack Output</b>	6V DC
<b>Ambient Temperature</b>	0°C...60°C
<b>BMS Connection Type</b>	BMS Connection via Caroma Smart Command connective hardware
<b>Communication Protocol</b>	Bluetooth 5.0
<b>Power Supply EMC Approvals</b>	CE, C-Tick and FCC
<b>Power Supply Safety Approvals</b>	RCM, UL, CUL, TUV, GS, SAA, CE and CB
<b>Power Supply Safety Compliance</b>	AS/NZS 60950-1, UL 60950, EN 60950, IEC 60950
<b>ROHS Compliance</b>	EN50581:2012
<b>EMC Compliance</b>	EN 301 489-1 V2.1.1, EN 300 328 V2.1.1, EN623111, EN62368-1: 2014, AS/NZS CISPR 32:2015 (ITE Class B)
<b>Electrical Safety Compliance</b>	IEC 60950-1, UL 60950-1, CSA C22.2 60950-1
<b>Complies with EC Directives</b>	RoHS2 Directive 2011/65/EU, Waste Electrical and Electronic Equipment (WEEE) Directive 2002/96/EC, Registration, Evaluation, Authorisation and Restriction of Chemicals (REACH) Directive, Conflict Minerals Directive
<b>IMPORTANT INFORMATION</b>	<p>Do not install this unit facing a mirror or any other electronic system operated by an infra-red sensor. To prevent reflection problems, it is recommended to keep a minimum distance of 1.5m between the sensor outlet and any other objects. Wearing high-vis clothing in front of the sensor can also cause accidental sensor activation.</p> <p>Trim kit (3-28) and body kit (1-2) are supplied separately.</p> <p>Not suitable for gravity feed systems.</p> <p>All pipework must be thoroughly flushed prior to installation, as foreign materials may block the solenoid or flow regulating device and reduce the flow of water.</p>